

SPECIFICATION



ROTATING TELESCOPIC HANDLER

**THE ALL-NEW
ALL-ROUNDER**



DO MORE, MASTER EVERY SITE.

Building on the proven performance of the 555 series, the 558 PRO Range delivers even more lifting power with an additional 300kg of capacity, giving you the strength to lift more, reach further and operate with confidence.

ALL-ROUND EASE OF USE

Our rotating telehandlers carry forward JCB's legacy of operator-focused design, featuring the intuitive, well-laid out control found in our renowned Loadall cab.



ALL-ROUND VERSATILITY

One machine, three functions; crane like reach, telehandler manoeuvrability and elevated platform access plus full 360° rotation for unmatched flexibility on site, our rotating telehandler has you covered.



ALL-ROUND SAFETY

From automatic stabilisation and load monitoring to intuitive joystick controls in cab and on a radio remote, our 558 PRO is designed to keep operations safe during every shift.



ALL-ROUND EFFICIENCY

From forks to winches, jibs to platform, switch attachments with ease and tackle any job with confidence designed for versatility and awkward job sites.



ALL-ROUND PRODUCTIVITY

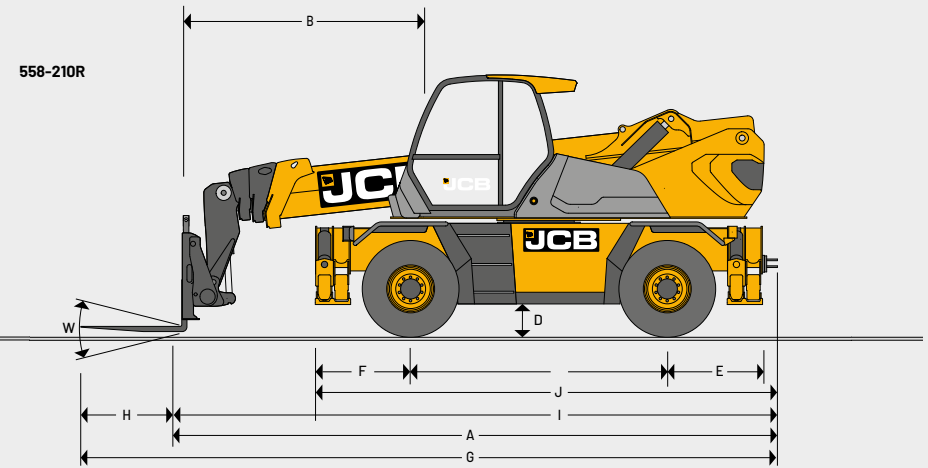
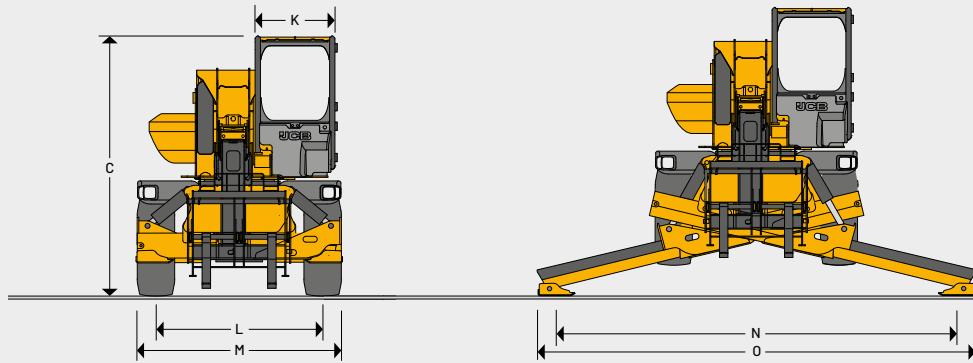
Built for busy sites and demanding schedules, our rotating handler offers seamless adaptability, robust performance, engineered for maximum uptime with 99% parts availability and 85% - part commonality.

558-210R PRO AND 558-260R PRO ROTATING TELESCOPIC HANDLERS

ENGINE		
Type		JCB DIESELMAX Stage V
Displacement	litres	4.8
Gross power	kW (hp)	112 (150) @ 2200 rpm
Max torque	Nm	600 @1500 rpm
Cylinders		4 in line
Fuel		Diesel direct injection turbocharged
Fuel tank	litres	190
AdBlue tank	litres	26
Gradeability		40%
Batteries	volts	2 x 12
Cooling system		Water – intercooler
TRANSMISSION AND HYDRAULICS		
Transmission mode		Bosch Rexroth
Transmission type		Two-speed hydrostatic
Drive wheels		4-wheel drive
Steering mode		4-wheel steer – 3 steering modes
HYDRAULICS		
Type		Variable displacement pump electronically controlled with variable displacement motor
Flow rate	l/min	160
Movement control		2 servo electric joysticks
Operating system pressure	bar	290
Tank capacity	litres	160
PERFORMANCE		
Rotation		Continuous 360° rotation of turret mounted on external slew ring with in cab manual slew lock
Max travel speed		40kph
AXLES		
Type		Dana Spicer – with epicyclic reduction gear
Oscillation		±8° oscillation with automatic hydraulic lock out on rear axle
BRAKES		
Type		Power brakes hydraulically activated, oil-immersed multi-disc type on each axle
Rear axle		SAHR park brake
OUTRIGGERS		
Type		4x telescopic outriggers with one touch auto deploy/level/retract
TYRES		
Type		445 / 65 R22.5

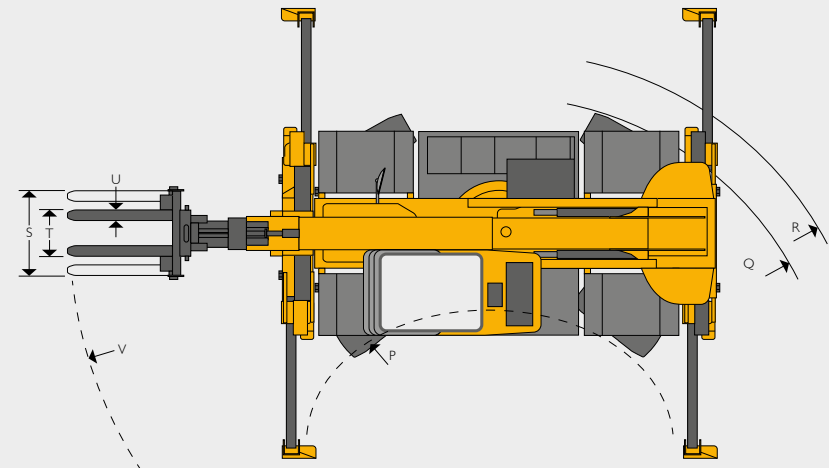
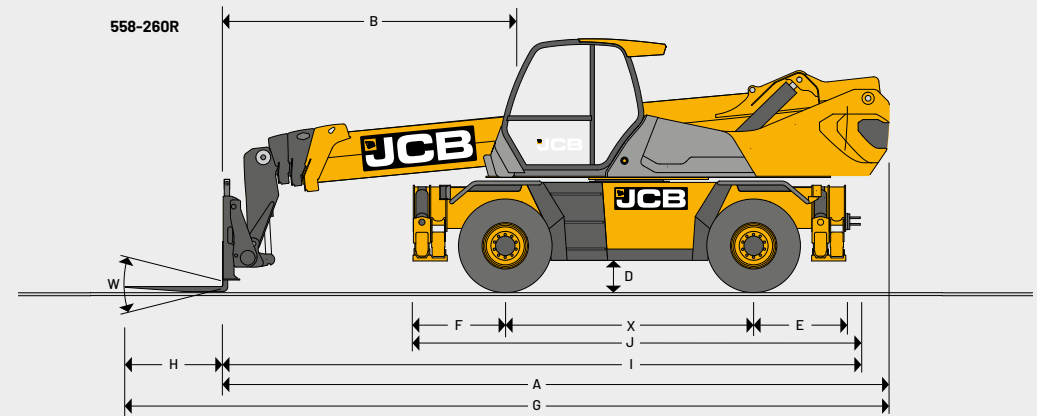
CARRIAGE				
Type	Q-Fit carriage			
Attachment recognition	RFID			
LOAD MANAGEMENT SYSTEM				
Full crane style load management system				
7" screen with rotary controller				
Envelope limits				
5 configurable speed profiles				
STANDARD CONFORMITY				
EN1459-2				
EN14401				
EN280				
ROPS/FOPS				
Stage V				
ISO10896-2				
POINT LOADING				
Model	RTH 558 210R	RTH 558 260R		
Capacity on wheels (forks)	4,500kg	4,000kg		
Load per front wheel	9,400kg	9,600kg		
Load per rear wheel	2,200kg	2,400kg		
Capacity on outrigger (100% deployed on forks)	5,800kg	5,800kg		
Maximum load on a single outrigger throughout 360° slew	13,000kg	13,200kg		
Load per front wheel (no load on forks slew aligned)	4,600kg	4,800kg		
Load per rear wheel (no load on forks slew aligned)	4,800kg	5,200kg		
CAPACITIES & WEIGHTS				
	558-210R PRO		558-260R PRO	
	m	ft-in	m	ft-in
Max lift height	20.5	67.3	25.5	83.8
Max reach	17.8	58.4	21.4	70.2
	kg	lbs	kg	lbs
Max lift capacity	5800	12800	5800	12800
Capacity at max height (Forks)	2500	5512	2000	4409
Capacity at max reach (Forks)	850	1874	300	661
Overall weight	18750	44337	19900	43872
Front axle unladen weight (boom retracted and lowered)	9230	20327	19590	21142
Rear axle unladen weight (boom retracted and lowered)	9530	21010	10310	22730

558-210R PRO AND 558-260R PRO ROTATING TELESCOPIC HANDLERS



DIMENSIONS

		558-210R PRO		558-260R PRO	
		m	ft-in	m	ft-in
A	Machine length no attachment	6.98	22.90	8.09	26.50
B	Steering wheel to carriage	3.17	10.40	3.94	12.90
C	Machine profile height	3.08	10.10	3.08	10.10
D	Minimum ground clearance	0.33	1.08	0.33	1.08
E	Rear axle centre to rear outrigger leg	1.15	3.78	1.15	3.78
F	Front axle centre to front outrigger leg	1.15	3.78	1.15	3.78
G1	Total length of machine including forks	8.28	27.17	9.38	30.80
G2	Total length of machine with forks retained	7.25	23.78	8.30	27.20
H1	Forks length	1.20	3.94	1.20	3.94
H2	Work Platform	2.54	8.33	2.54	8.33
H3	5.5t Carriage winch	0.73	2.39	0.73	2.39
H4	2t / 2m Jib winch	2.03	6.66	2.03	6.66
H5	0.9 C.U.M shovel	0.97	3.18	0.97	3.18
H6	Reduced height jib 5.5t - 3 position	2.21	7.25	2.21	7.25
I	Heel of forks to recovery hitch	7.08	23.20	7.94	25.70
J	Recovery hitch to front outrigger legs	5.50	18.20	5.50	18.20
K	Width of cab (glass to glass)	0.93	3.05	0.93	3.05
L	Wheel base (centre to centre) *Tyre dependant	2.00	6.56	2.00	6.56
M	O outrigger base (Stowed)	2.51	8.24	2.51	8.24
N	O outrigger base (100% extension - centre to centre)	5.00	16.41	5.00	16.41
O	O outrigger base (100% extension - full width)	5.31	17.40	5.13	17.40
P	Inside wheel turning circle	1.90	6.20	1.90	6.20
Q	Outside wheel turning circle	4.06	13.30	4.06	13.30
R	Slewing radius of counterweight	2.73	8.95	3.23	10.58
S	Forks spacing - max	1.10	3.60	1.10	3.60
T	Forks spacing - min	0.32	1.06	0.32	1.06
U	Width of individual fork	0.10	0.33	0.10	0.33
V	Max forks turning circle	6.24	20.50	6.90	22.64



STANDARD/OPTIONAL EQUIPMENT

TYRES		
MITAS AC70+ 445/65 R22.5 160G traction tyre		•
MITAS AR-01 445/65 R22.5 169F smooth surface industrial tyre		+
MICHELIN XZL 445/65 R22.5 168G multipurpose tyre		+
DRIVETRAIN		
JCB DieselMax 112kW / 150HP Stage V engine.		•
Engine block heater - 110V		+
Engine block heater - 240V		+
Engine grid heater		+
20kph transmission speed limit		+
x2 wheel chocks - chassis mounted		+
Hydraulic tank cap lock		+
Hydraulic tank drain kit		+
CARRIAGE		
JCB clearview carriage		•
Manual Q-FIT pin locking		•
Automatic auxiliary venting Quick Release Couplings (QRC)		•
Attachment recognition reader (RFID tag)		•
LIFT END / AUXILIARY		
Man platform ready (EN 280 compliant)		•
Radio remote control: full hydraulic control of lift end services		•
Single AUX		•
Twin AUX		+
CAB		
LMS 7" Load Management Screen		•
RFID automatic attachment recognition on LMS		•
Heater system		•
Tilt and extend steer column		•
Sun blind		•
Radio Ready + Radio Remote Control		•
2 speed front wiper with intermittent setting		•
Deluxe air suspension heated seat		•
Seat mounted servo joysticks		•
LH dip fog/rev road lights		•
x1 Emergency Stop		•
Manual rotating slew lock lever		•
Air conditioning		•
Orange seatbelt		•
Keypad immobiliser		•
Roof and screen guard		+
Fire extinguisher		+

LIGHTING		
Road lights		•
Full LED work light kit: 9x LED worklights (Boom and Cab)		•
LED amber beacon: hinged		•
Beacon kit: LED amber beacon & green beacon		+
LED amber beacon: magnetic		+

ATTACHMENTS		
Floating forks & Clearview frame, 5800kg capacity		•
360° Rotating Forks (RoMastor), 1700kg capacity		+
Wide Fork Frame, 5500kg capacity		+
Winch: 5500kg capacity		+
2m JIB winch: 2000kg capacity		+
Platform: 1000kg capacity, 180° slew		+
JIB 680mm: 5500kg capacity		+
JIB: 3 position, 5500kg capacity		+
Jib: 4m, 400kg capacity		+
0.9 C.U.M shove		+
Special: 3D RoMastor, Media		+

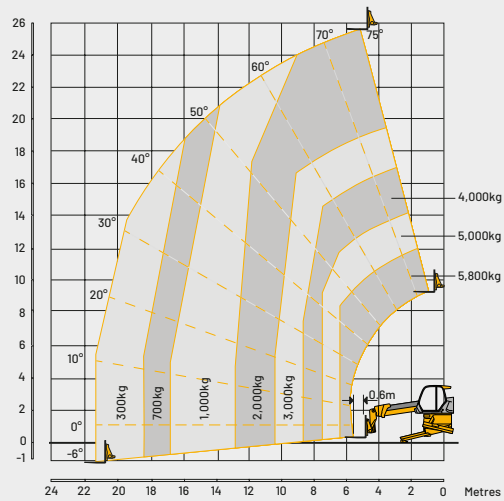
ADDITIONAL FEATURES		
Group greasing		•
JCB LiveLink Telematics		•
Chassis with x4 points of access/egress		•
Camera kit: Rear camera x1, side camera x1		•
White noise reversing alarm		•
x2 Tool box and chain box		•
Outrigger mats and stowage		+
Extra outrigger mirror set'		+
x4 emergency E-Stops on each chassis corner		+

STANDARD •

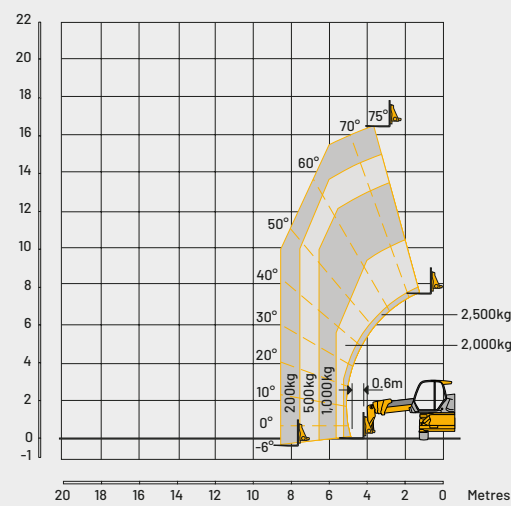
OPTIONAL +

558-210R PRO AND 558-260R PRO ROTATING TELESCOPIC HANDLERS

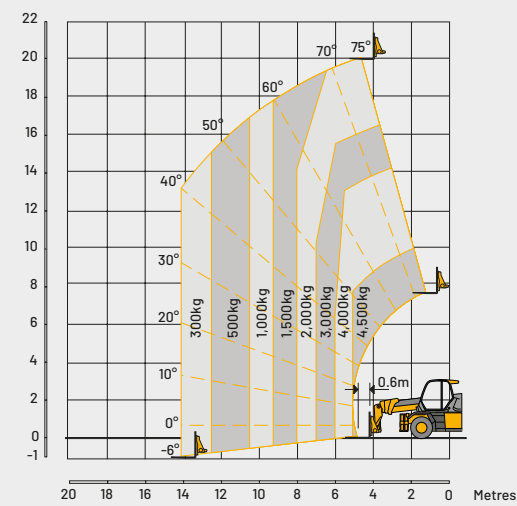
558-210R LIFT PERFORMANCE - FORKS, 360° OUTRIGGERS DEPLOYED



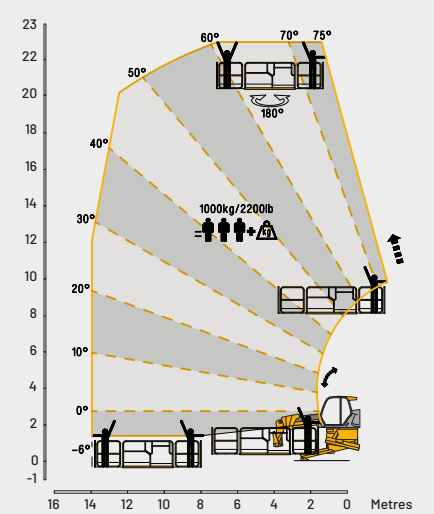
558-210R LIFT PERFORMANCE - FORKS, 360° ON WHEELS



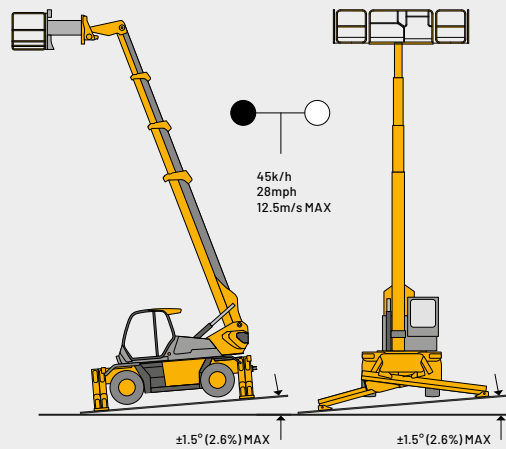
558-210R LIFT PERFORMANCE - FORKS, ON WHEELS STRAIGHT



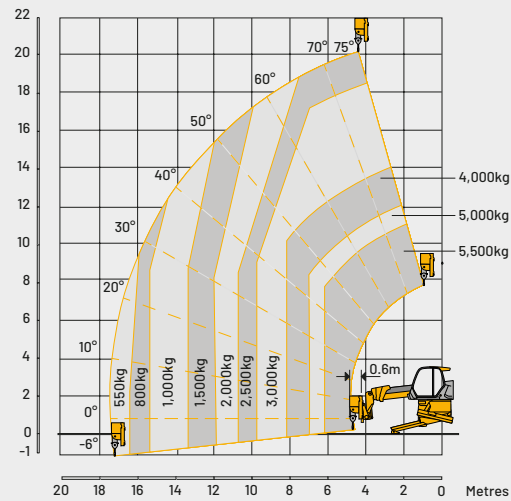
558-210R LIFT PERFORMANCE - WORK PLATFORM, OUTRIGGERS DEPLOYED



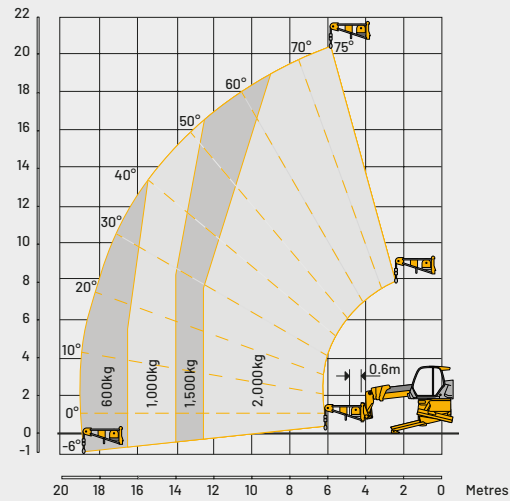
558-210R LIFT PERFORMANCE - WORK PLATFORM, OUTRIGGERS DEPLOYED



558-210R LIFT PERFORMANCE - CARRIAGE WINCH, OUTRIGGERS DEPLOYED

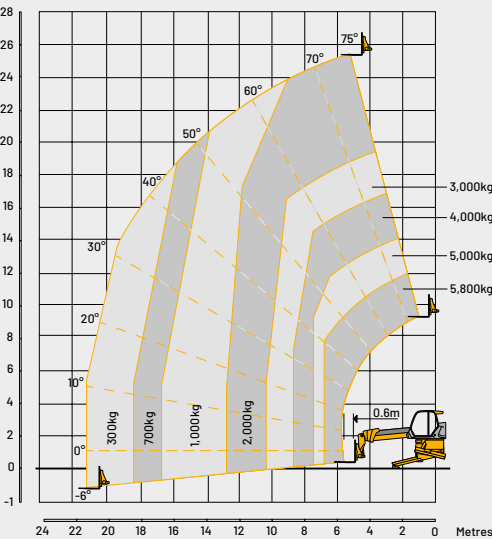


558-210R LIFT PERFORMANCE - JIB WINCH, OUTRIGGERS DEPLOYED

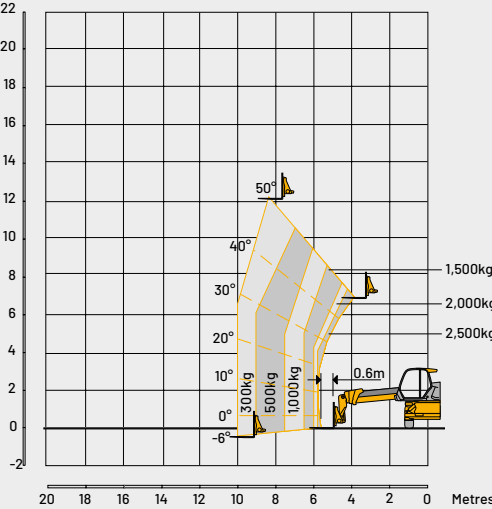


558-210R PRO AND 558-260R PRO ROTATING TELESCOPIC HANDLERS

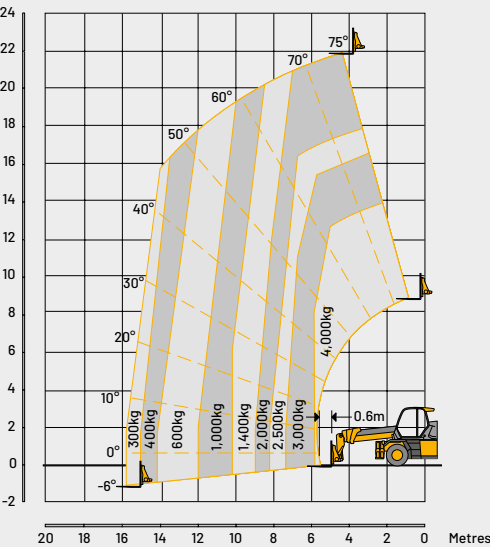
558-260R LIFT PERFORMANCE - FORKS, OUTRIGGERS DEPLOYED



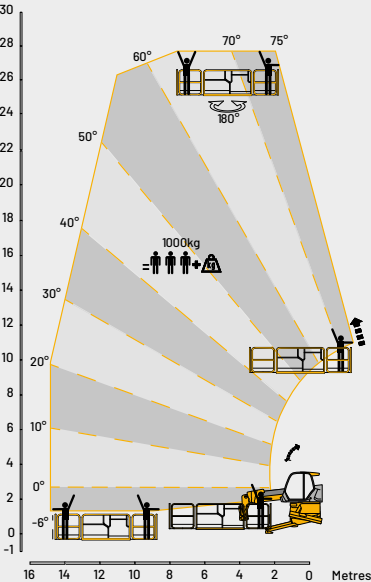
558-260R LIFT PERFORMANCE - FORKS, ON WHEELS 360°



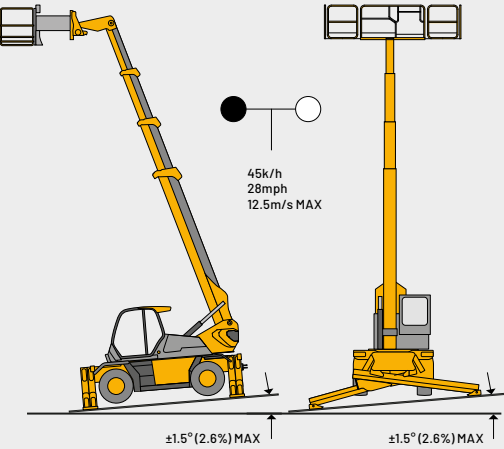
558-260R LIFT PERFORMANCE - FORKS, ON WHEELS STRAIGHT



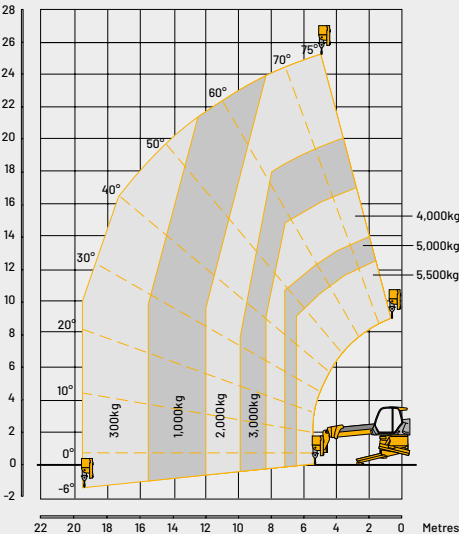
558-260R LIFT PERFORMANCE - WORK PLATFORM OUTRIGGERS DEPLOYED



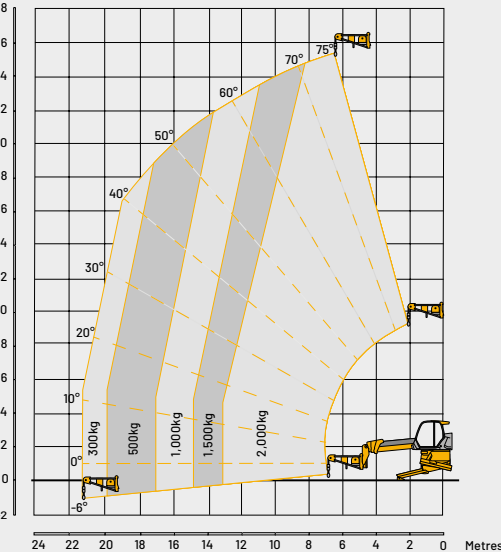
558-260R LIFT PERFORMANCE - WORK PLATFORM OUTRIGGERS DEPLOYED



558-260R LIFT PERFORMANCE - CARRIAGE WINCH, OUTRIGGERS DEPLOYED



558-260R LIFT PERFORMANCE - JIB WINCH, OUTRIGGERS DEPLOYED



ROTATING TELESCOPIC HANDLER

THE ALL-NEW ALL-ROUNDER

JCB, Rokester, Staffordshire, United Kingdom ST14 5JP. Tel: +44 (0)1889 590312. salesinfo@jcb.com. www.jcb.com

©2025 JCB Sales. All rights reserved. No part of this publication may be reproduced, stored in a retrieval system, or transmitted in any form or by any other means, electronic, mechanical, photocopying or otherwise, without prior permission from JCB Sales. All references in this publication to operating weights, sizes, capacities and other performance measurements are provided for guidance only and may vary dependant upon the exact specification of machine. They should not therefore be relied upon in relation to suitability for a particular application. Guidance and advice should always be sought from your JCB Dealer. JCB reserves the right to change specifications without notice. Illustrations and specifications shown may include optional equipment and accessories. The JCB logo is a registered trademark of J C Bamford Excavators Ltd.

32755 en-GB Issue 2



WHY JCB

